

# For Sale Owner-User Office Opportunity

20500 Civic Center Drive  
Southfield, MI 48076  
±180,291 SF

[Click Here for Property Website](#)

±180,291 SF | CLASS B OFFICE | PROFORMA NOI: \$1,000,000

NAI Farberman and Keen-Summit are pleased to present the opportunity to acquire 20500 Civic Center in Southfield, Michigan. The offering presents an outstanding opportunity to acquire a high-quality office property in the sought-after Southfield market, ready to be used as a headquarters building for an owner or reconfigured as a multi-tenant building. Aside from the excellent location, 20500 Civic Center offers a park-like setting, a beautiful atrium lobby, a commercial kitchen and café, an employee recreation room, abundant parking, and nearby amenities including retail shops, hotels, and restaurants in the surrounding area

## Property Features:



Commercial Kitchen & Cafe



Various Conference Rooms,  
Executive Suites and Breakout  
Rooms



Prominent Location with Great  
Visibility



Updated High Quality Finishes (Both  
Interior And Exterior) at the Property



Serene Garden Atrium and Lushly  
Landscaped Outdoor Courtyard



Convenient Access to Area  
Amenities



Owner/User Opportunity



Roof Top Helipad



Easy Freeway Access to I-696 and  
M-10

For more information, contact the Exclusive Sales Agent(s):

### Todd Szymczak

SVP of Investment Sales  
248 351 6315  
szymczak@farbman.com

### Alis (Manoogian) Babi, CCIM

Assistant Vice President  
248 351 4370  
babi@farbman.com

### Mario Giglio III

Assistant Vice President  
248 302 0127  
giglio@farbman.com

### Harold Bordwin

Principal and Co-President  
914.980.8555  
hbordwin@keen-summit.com

### Matthew Bordwin

Principal and Co-President  
646.381.9202  
mbordwin@keen-summit.com

### Chris Mahoney

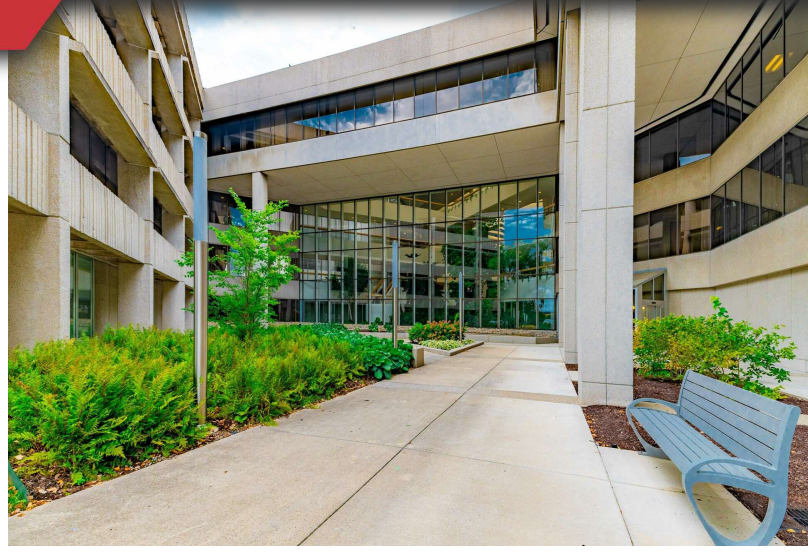
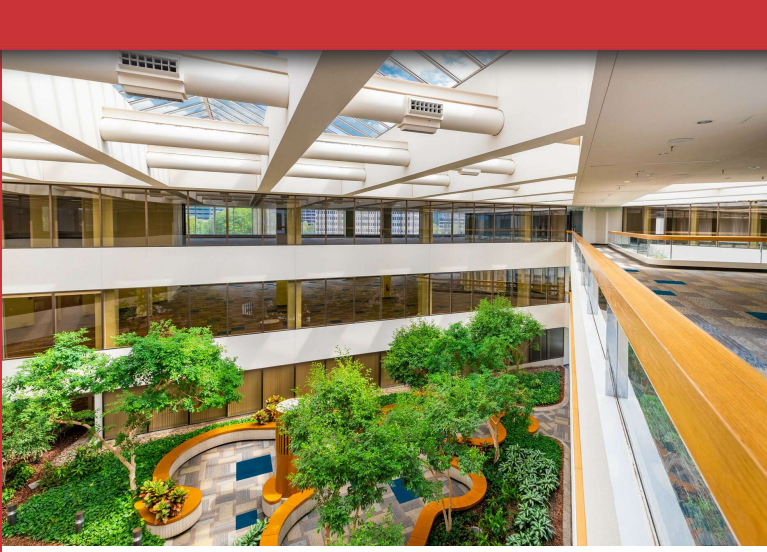
Senior Managing Director  
646.381.9205  
cmahoney@keen-summit.com

### Heather Milazzo

Managing Director  
646.381.9207  
hmilazzo@keen-summit.com

# For Sale Owner-User Office Opportunity

20500 Civic Center Drive  
Southfield, MI 48076  
±180,291 SF



Dimensions are subject to field verification